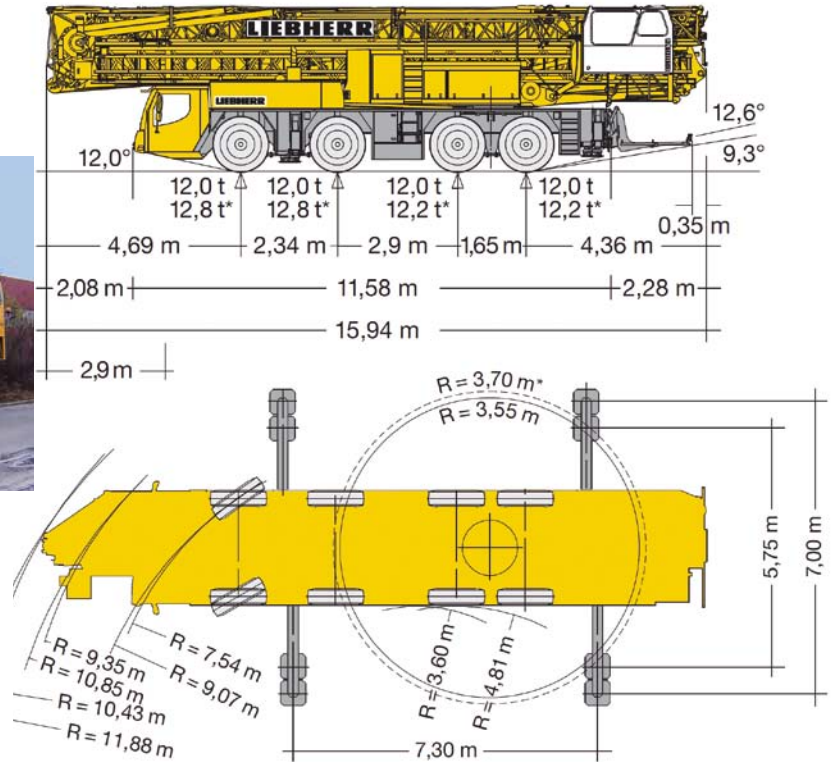


- Kranarbeiten
- Transporte
- Schwertransporte
- Tieflader
- www.armbruster-autokrane.de

MK 88



Traglast MK 88 Max. Lastmoment 115 mt

Ausleger horizontal

	7,30 m x 7,00 m	m		m / kg																	
				m / kg	12,0	14,0	16,0	18,0	20,0	22,0	24,0	26,0	28,0	30,0	32,0	34,0	36,0	38,0	40,0	42,0	44,0
	max. 6,5 Bft (14 m/sec.)	45,0	3,3-11,0 8000	7370	6360	5580	4960	4460	4050	3700	3400	3140	2920	2720	2540	2390	2250	2120	2000	1900	1850
	max. 8,0 Bft (20 m/sec.)	45,0	3,3-10,0 8000	6770	5850	5140	4570	4110	3730	3410	3130	2900	2690	2510	2340	2200	2070	1950	1840	1750	1700

	7,30 m x 5,75 m	m		m / kg																	
				m / kg	12,0	14,0	16,0	18,0	20,0	22,0	24,0	26,0	28,0	30,0	32,0	34,0	36,0	38,0	40,0	42,0	44,0
	max. 6,5 Bft (14 m/sec.)	45,0	3,3-10,0 8000	* 6480	5430	4660	4070	3610	3230	2920	2660	2430	2240	2070	1920	1790	1680	1570	1480	1390	1350
	max. 8,0 Bft (20 m/sec.)	45,0	3,3- 8,5 8000	* 5530	4690	4060	3560	3170	2850	2580	2350	2160	1990	1840	1710	1590	1490	1400	1310	1240	1200

Außer Betrieb keine Demontage notwendig.

Auslegersteilstellungen

	7,30 m x 7,00 m	m		15°									45°								
				m									kg								
	max. 6,5 Bft (14 m/sec.)	45,0		3,2 - 38,0									2,7 - 31,9								
	max. 8,0 Bft (20 m/sec.)	45,0		38,0 - 43,3									1850								
				1850 - 1600*									1850 - 1600*								
				1850									2,7 - 28,0								
				32,0 - 43,3									28,0 - 31,9								
				1850 - 1300*									1850 - 1600*								

	7,30 m x 7,00 m	m		30°															
				m / kg															
				8,0	10,0	12,0	14,0	16,0	18,0	20,0	22,0	24,0	26,0	28,0	30,0	32,0	34,0	36,0	38,9
	max. 6,5 Bft (14 m/sec.)	45,0	3,0-10,0 6000	6000	6000	5260	4690	4220	3830	3500	3220	2980	2770	2580	2410	2260	2130	2010	1850
	max. 8,0 Bft (20 m/sec.)	45,0	3,0- 8,0 6000	* 6000	5200	4580	4080	3670	3340	3050	2800	2590	2410	2240	2100	1970	1850	1740	1600